

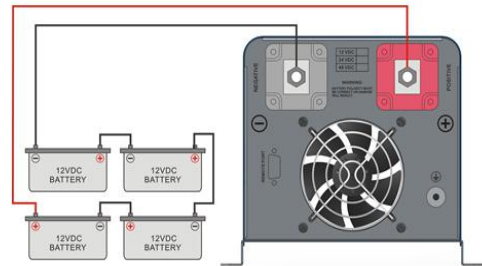


## LOW FREQUENCY INVERTER

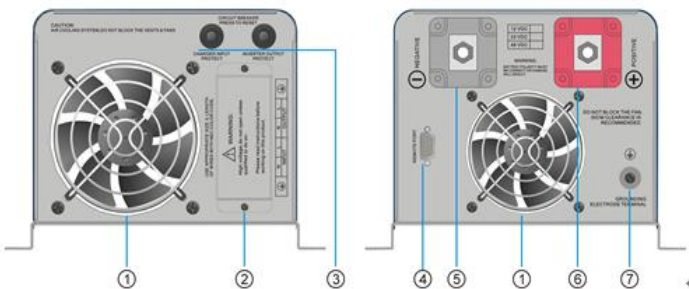
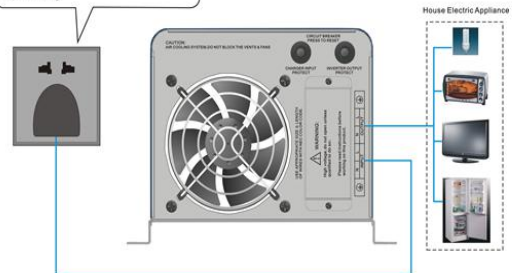
**FT-1KW/2KW/3KW/**

**4KW5KW/6KW/8KW/10KW**

- Double CPU intelligent control technology, excellent performance
- **Solar priority**、**Grid power priority** mode could be set, application flexible
- Charge current/battery type could be set, convenient and practical
- Intelligent fan control, safe and reliable
- Pure sine wave AC output, and be adapt to all kinds of loads;
- LCD display equipment parameter in real-time, operation status be clear at a glance
- Output overload, short circuit protection, Battery over voltage/low voltage protection, over temperature protection(85°C),  
AC charge voltage protection,



Note: Input current above 10A of the machine, Please use power connection pile to connect into input terminal for input wiring



- ①-- Fan
- ②-- AC input/output terminal
- ③--AC input/output fuse holder
- ④--RS232 communication interface(optional function)
- ⑤--Battery terminal negative input terminal
- ⑥-- Battery terminal positive terminal
- ⑦-- Earth terminal

## TECHNICAL DATA

Type: FT-		1KW	2KW	3KW	4KW	5KW	6KW	8KW	10KW	
Rated power		1000W	2000W	3000W	4000W	5000W	6000W	8000W	10KW	
Battery	Rated voltage	12VD/24VDC /48VDC		24VDC/48VDC		24/48/96 VDC	48/96VDC	48/96VDC		
	AC Charge current	30A (default) -C0-C6 can be set								
	Battery type	U0-U7 can be set								
AC Input	Voltage range	85-138VAC;170-275VAC								
	Frequency	45-65Hz								
Output	Voltage range	110VAC/127VAC;220VAC; ±5%( Inverter mode)								
	Frequency	50/60Hz±1%( <b>automatic identification</b> )								
	Output wave	Pure sine wave								
	Switching time	<10ms( typical load)								
	Efficiency	>85% ( 80% Resistance load )								
	Overload	110-120% power load 30S protect; >160%/300ms;								
	Protection	Battery overvoltage/lowvoltage, overload, short circuit protection, overtemperature protection, etc.								
Operating ambient temperature		-20℃~+40℃								
Storage ambient temperature		-25℃ - +50℃								
Operating/Storage ambient		0-90% No condensation								
Machine Size: L*W*H (mm)		486*248*179			555*308*240			655*332*260		
Package size: L*W*H (mm)		550*310*230			640*370*240			715*365*310		
Net weight/Gross weight(Kg)		14/15	17/19	19/22	25/27	29/31	32/35	50/55	52/58	